



**Sunway**  
Electro-Machinery

# We Control The Water To Serve You

[www.sunwaypumps.com](http://www.sunwaypumps.com)

**SCL-JARDIN™**



**Sunway** | **SCL-JARDIN™**  
Electro-Machinery

宁波辰威电机有限公司  
NINGBO SUNWAY ELECTRO-MACHINERY CO., LTD.

地址：宁波市联丰中路新庄新工业区9号  
ADD: No.9 Xinzhuang New Industrial Park, Lianfeng Road,  
Ningbo China

电话 (TEL) : +86-574-28822575 28822576 28822577  
传真 (FAX) : +86-574-28822570

E-mail: [sunwayem@vip.163.com](mailto:sunwayem@vip.163.com)



For more information,  
please visit our website:

[www.sunwaypumps.com](http://www.sunwaypumps.com)



**2024/2025**  
CATALOGUE



# About SUNWAY

Ningbo SUNWAY Electro-Machinery Co., Ltd. is a modern factory specializing in the manufacture of various household water pumps. The products mainly cover several series (garden water pumps, household water pumps, portable multi-purpose lithium water pumps and various water pump accessories). These water pumps are widely used in household water supply and drainage systems, irrigation for landscaping and gardening, household cleaning etc., gradually forming a diversified product series with water pumps as the main products and extending to other water pump related products.

At present, the company has a modern standard factory building of 15,000 square meters, and the annual exporting quantity of water pumps is more than 1.5 million units. The company always adheres to the business philosophy of " Relying on precise operation methods as the foundation of the business, winning with excellent quality ", as the lifeline of the company's development, and is committed to providing global users with high-quality, energy-saving, environmentally friendly and various practical water pumps.

## Business advantage

As a R&D and manufacturing enterprise, the company's design and R&D team continues to expand, and actively develops new products to meet the various needs of market end customers with the survival concept of actively seeking changes. It has laid a solid foundation for the company's healthy and sound development. All of our products have passed CE, GS, EMC, ETL and other international certifications. Also our company already achieved ISO9001 for quality management system, ISO14001 for environmental management and other related system certifications.

## Enterprise transformation

In recent years, the company has actively built a modern factory with lean, automated and digital information management, and Gradually formed a digital information management and control workshop, leads to produce low-cost and high-quality water pumps, by relying on scientific and technological strength.

Welcome to purchase our products!

Holding the idea of "professionalism, innovation and efficiency," SUNWAY is devoted to providing quality products and services for every client worldwide and will forever proceed on the path of innovation.

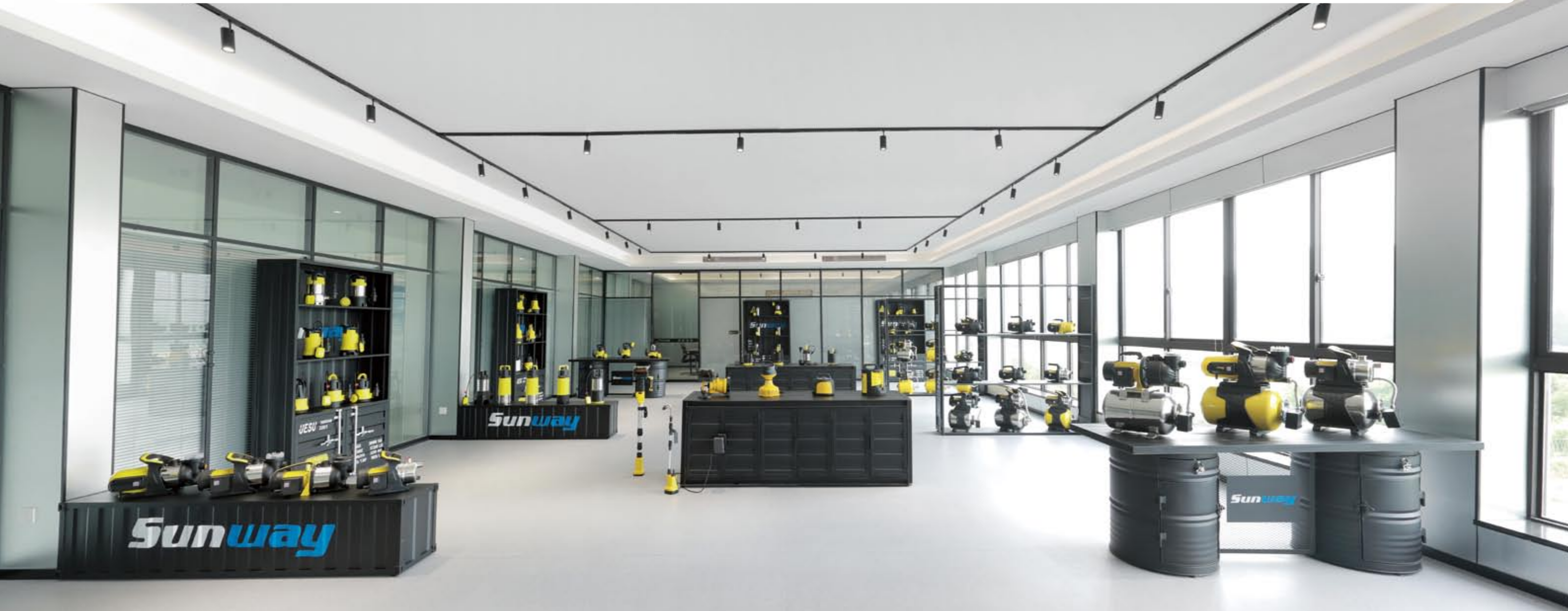
SOL-JARDIN™

宁波辰威电机有限公司  
NINGBO SUNWAY ELECTRO-MACHINERY CO., LTD.

Sunway  
Electro-Machinery 辰威电机

# SUNWAY MAKES EVERY RIGOUR TRACEABLE

We inject our ingenuity and craftsmanship into the very detail,  
Keep improving and polishing our product to live up to your trust,  
And always produce a better version of the product!



The products can be applied to garden irrigation, drainage, domestic water supply, cleansing, and other scenarios.

## Experienced in-house research and development team

SUNWAY uses advanced ideas to provide customers a one-stop service from concept design to production.

We have an advanced R&D (research and development) team. The R&D center established by our experienced research-and-development engineers is equipped with advanced testing equipment at home and abroad, laying a solid foundation for product design and production.

## High-standard production plants

With advanced and comprehensive automated equipment and sophisticated technology, SUNWAY escorts standardized production.



We continue optimizing technology, introducing advanced equipment and instruments, and improving quality management.

Scientific and reasonable production area division fulfills strict lean management.

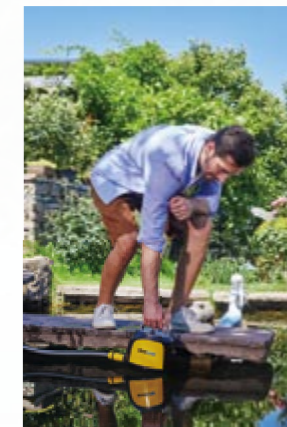




## Battery Pumps

Protection Grade **IPX8**

**20V** LI-ION



**CLP020C-1**

Remote key

Product NO.	CLP020C-1
V&Hz	20V
Max.pump rate(L/H)	3500+
Max.height(m)	11+
Working time	35min
Battery capacity	4000mAh
Charging time	2h
QTY/20'CTN	1512pcs
QTY/40'CTN	3096pcs
QTY/40'(H)CTN	3784pcs



## Battery Pumps

Protection Grade **IPX8**

Protection Grade **IPX8**

**20V LI-ION**



**CLP020C-2**



Can be used separately according to working conditions

**Battery box:**  
Protection Grade IPX4

Product NO.	CLP020C-2
V&Hz	20V
Max.pump rate(L/H)	2800+
Max.height(m)	11+
Working time	25min/50min
Battery capacity	2000mAh/4000mAh
QTY/20'CTN	1100pcs
QTY/40'CTN	2200pcs
QTY/40'(H)CTN	2400pcs

## Battery Pumps

Protection Grade **IPX8**

**20V LI-ION**



**CLP020C-3**



Can be used separately according to working conditions

**Battery box:**  
Protection Grade IPX4

Product NO.	CLP020C-3
V&Hz	20V
Max.pump rate(L/H)	2500+
Max.height(m)	11+
Working time	25min/50min
Battery capacity	2000mAh/4000mAh
QTY/20'CTN	2688pcs
QTY/40'CTN	5376pcs
QTY/40'(H)CTN	6272pcs



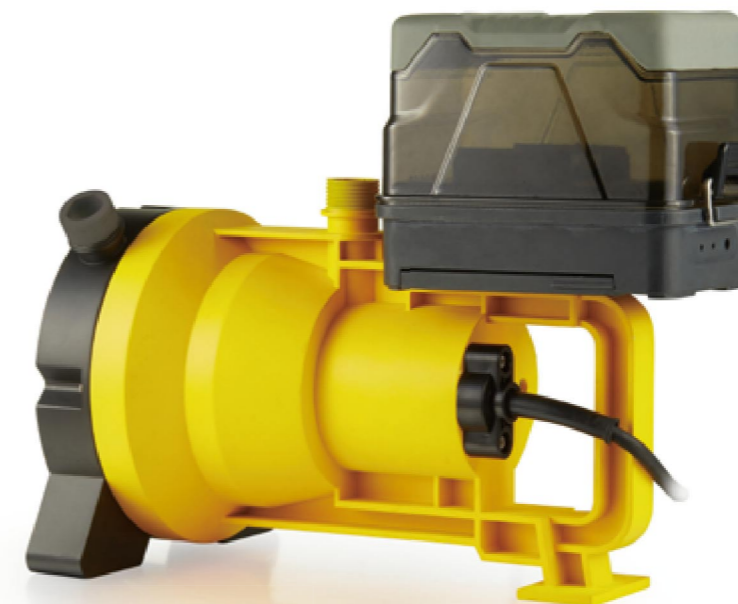
# Battery Pumps

Protection Grade **IPX8**

Protection Grade **IPX8**

**20V LI-ION**

**Amphibious Pump**



Can be used separately according to working conditions

**Battery box:**  
Protection Grade **IPX4**



**CLP020C-4**

Low water level suction



Product NO.	CLP020C-4
V&Hz	20V
Max.pump rate(L/H)	3200+
Max.height(m)	10+
Working time	20min/40min
Battery capacity	2000mAh/4000mAh
QTY/20'CTN	2100pcs
QTY/40'CTN	4340pcs
QTY/40'(H)CTN	4960pcs

# Battery Pumps

Protection Grade **IPX8**

**20V** LI-ION



Replaceable battery



**CLP020C-5**

Product NO.	CLP020C-5
V&Hz	20V
Max.pump rate(L/H)	3200+
Max.height(m)	11+
Working time	20min/40min
Battery capacity	2000mAh/4000mAh
QTY/20'CTN	1242pcs
QTY/40'CTN	2538pcs
QTY/40'(H)CTN	3960pcs





# Submersible Pumps

Protection Grade IPX8

## Main Specifications

Liquid temperature up to 35 °C  
 Protection IP X8  
 Max grain size: 5mm / 16 mm



CSPxxxLD-1



CSPxxxC-1 B

Product NO.	CSP250C-1(B)	CSP400C-1(B)
Power	250W	400W
V&Hz	230V/50Hz, 115V/60Hz	230V/50Hz, 115V/60Hz
Max.pump rate(L/H)	4000	5000
Max.height(m)	6	6.5
Max.depth(m)	7	7
Cable	H05RN-F3G0.75mm <sup>2</sup> 05RN8-F3G0.75mm <sup>2</sup>	H05RN-F3G0.75mm <sup>2</sup> 05RN8-F3G0.75mm <sup>2</sup>
Length of cable(m)	10	10
QTY/20'CTN	2352pcs	2352pcs
QTY/40'CTN	4704pcs	4704pcs
QTY/40'(H)CTN	5376pcs	5376pcs

Product NO.	CSP400LD-1
Power	400W
V&Hz	230V/50Hz, 115V/60Hz
Max.pump rate(L/H)	5500
Max.height(m)	5
Max.depth(m)	7
Cable	H05RN-F3G0.75mm <sup>2</sup> 05RN8-F3G0.75mm <sup>2</sup>
Length of cable(m)	10
QTY/20'CTN	1800pcs
QTY/40'CTN	3600pcs
QTY/40'(H)CTN	4200pcs

# Submersible Pumps

Protection Grade IPX8

## Main Specifications

Liquid temperature up to 35 °C  
 Protection IP X8  
 Max grain size: 5mm



LONG LIFE  
HIGH QUALITY

CSPxxxC-1 Y

Product NO.	CSP250C-1Y	CSP350C-1Y
Power	250W	350W
V&Hz	230V/50Hz, 115V/60Hz	230V/50Hz, 115V/60Hz
Max.pump rate(L/H)	4500	5000
Max.height(m)	6	7
Max.depth(m)	7	7
Cable	H05RN-F3G0.75mm <sup>2</sup> 05RN8-F3G0.75mm <sup>2</sup>	H05RN-F3G0.75mm <sup>2</sup> 05RN8-F3G0.75mm <sup>2</sup>
Length of cable(m)	10	10
QTY/20'CTN	2380pcs	2380pcs
QTY/40'CTN	4760pcs	4760pcs
QTY/40'(H)CTN	5440pcs	5440pcs

Product NO.	CSP350C-3
Power	350W
V&Hz	230V/50Hz, 115V/60Hz
Max.pump rate(L/H)	5500
Max.height(m)	11
Max.depth(m)	7
Max.grain size(mm)	0.5~2
Cable	H05RN-F3G0.75mm <sup>2</sup> 05RN8-F3G0.75mm <sup>2</sup>
Length of cable(m)	10
QTY/20'CTN	1296pcs
QTY/40'CTN	2592pcs
QTY/40'(H)CTN	2896pcs



CSPxxxC-3

# Submersible Pumps

Protection Grade **IPX8**

## Main Specifications

Liquid temperature up to 35 °C  
 Protection IP X8  
 Max grain size: 5mm



**CSPxxxC-5**



**CSPxxxC-7**



**CSPxxxC-4**

# Submersible Pumps

Protection Grade **IPX8**

## Main Specifications

Liquid temperature up to 35 °C  
 Protection IP X8  
 Max grain size: 35mm



**CSPxxxD-5**



**CSPxxxD-7**



**CSPxxxD-4**

Product NO.	CSP250C-4(5,6,7)	CSP400C-4(5,6,7)	CSP550C-4(5,6,7)	CSP750C-4(5,6,7)	CSP900C-4(5,6,7)
Power	250W	400W	550W	750W	900W
V&Hz	230V/50Hz, 115V/60Hz	230V/50Hz, 115V/60Hz	230V/50Hz, 115V/60Hz	230V/50Hz, 115V/60Hz	230V/50Hz, 115V/60Hz
Max.pump rate(L/H)	5500	7300	11500	13000	15000
Max.height(m)	6	7.5	8.5	9.5	10
Max.depth(m)	7	7	7	7	7
Cable	H05RN-F3G0.75mm <sup>2</sup> 05RN8-F3G0.75mm <sup>2</sup>	H05RN-F3G0.75mm <sup>2</sup> 05RN8-F3G0.75mm <sup>2</sup>	H05RN-F3G0.75mm <sup>2</sup> 05RN8-F3G0.75mm <sup>2</sup>	H05RN-F3G0.75mm <sup>2</sup> 05RN8-F3G0.75mm <sup>2</sup>	H07RN-F3G1.0mm <sup>2</sup> H07RN8-F3G1.0mm <sup>2</sup>
Length of cable(m)	10	10	10	10	10
QTY/20'CTN	2380pcs	2380pcs	2380pcs	2040pcs	2040pcs
QTY/40'CTN	4760pcs	4760pcs	4760pcs	4080pcs	4080pcs
QTY/40'(H)CTN	5440pcs	5440pcs	5440pcs	4760pcs	4760pcs

Product NO.	CSP400D-4(5,6,7)	CSP550D-4(5,6,7)	CSP750D-4(5,6,7)	CSP900D-4(5,6,7)	CSP1100D-4(5,6,7)
Power	400W	550W	750W	900W	1100W
V&Hz	230V/50Hz, 115V/60Hz	230V/50Hz, 115V/60Hz	230V/50Hz, 115V/60Hz	230V/50Hz, 115V/60Hz	230V/50Hz, 115V/60Hz
Max.pump rate(L/H)	8500	12500	14000	15000	17500
Max.height(m)	5	7	8	8.5	9
Max.depth(m)	7	7	7	7	7
Cable	H05RN-F3G0.75mm <sup>2</sup> 05RN8-F3G0.75mm <sup>2</sup>	H05RN-F3G0.75mm <sup>2</sup> 05RN8-F3G0.75mm <sup>2</sup>	H05RN-F3G0.75mm <sup>2</sup> 05RN8-F3G0.75mm <sup>2</sup>	H07RN-F3G1.0mm <sup>2</sup> H07RN8-F3G1.0mm <sup>2</sup>	H07RN-F3G1.0mm <sup>2</sup> H07RN8-F3G1.0mm <sup>2</sup>
Length of cable(m)	10	10	10	10	10
QTY/20'CTN	2040pcs	2040pcs	2040pcs	2040pcs	2040pcs
QTY/40'CTN	4080pcs	4080pcs	4080pcs	4080pcs	4080pcs
QTY/40'(H)CTN	4760pcs	4760pcs	4760pcs	4760pcs	4760pcs

# Submersible Pumps

Protection Grade **IPX8**

## Main Specifications

Liquid temperature up to 35 °C  
 Protection IP X8  
 Max grain size: 5mm / 35mm



**CSPxxxC-5(B)**



**CSPxxxD-5(B)**

Product NO.	CSP250C-5(B)	CSP400C-5(B)	CSP550C-5(B)	CSP750C-5(B)	CSP900C-5(B)
Power	250W	400W	550W	750W	900W
V&Hz	230V/50Hz, 115V/60Hz	230V/50Hz, 115V/60Hz	230V/50Hz, 115V/60Hz	230V/50Hz, 115V/60Hz	230V/50Hz, 115V/60Hz
Max.pump rate(L/H)	5500	7300	11500	13000	15000
Max.height(m)	6	7.5	8.5	9.5	10
Max.depth(m)	7	7	7	7	7
Cable	H05RN-F3G0.75mm <sup>2</sup> 05RN8-F3G0.75mm <sup>2</sup>	H05RN-F3G0.75mm <sup>2</sup> 05RN8-F3G0.75mm <sup>2</sup>	H05RN-F3G0.75mm <sup>2</sup> 05RN8-F3G0.75mm <sup>2</sup>	H05RN-F3G0.75mm <sup>2</sup> 05RN8-F3G0.75mm <sup>2</sup>	H07RN-F3G1.0mm <sup>2</sup> H07RN8-F3G1.0mm <sup>2</sup>
Length of cable(m)	10	10	10	10	10
QTY/20'CTN	2380pcs	2380pcs	2380pcs	2040pcs	2040pcs
QTY/40'CTN	4760pcs	4760pcs	4760pcs	4080pcs	4080pcs
QTY/40'(H)CTN	5440pcs	5440pcs	5440pcs	4760pcs	4760pcs

Product NO.	CSP400D-5(B)	CSP550D-5(B)	CSP750D-5(B)	CSP900D-5(B)	CSP1100D-5(B)
Power	400W	550W	750W	900W	1100W
V&Hz	230V/50Hz, 115V/60Hz	230V/50Hz, 115V/60Hz	230V/50Hz, 115V/60Hz	230V/50Hz, 115V/60Hz	230V/50Hz, 115V/60Hz
Max.pump rate(L/H)	8500	12500	14000	15000	17500
Max.height(m)	5	7	8	8.5	9
Max.depth(m)	7	7	7	7	7
Cable	H05RN-F3G0.75mm <sup>2</sup> 05RN8-F3G0.75mm <sup>2</sup>	H05RN-F3G0.75mm <sup>2</sup> 05RN8-F3G0.75mm <sup>2</sup>	H05RN-F3G0.75mm <sup>2</sup> 05RN8-F3G0.75mm <sup>2</sup>	H07RN-F3G1.0mm <sup>2</sup> H07RN8-F3G1.0mm <sup>2</sup>	H07RN-F3G1.0mm <sup>2</sup> H07RN8-F3G1.0mm <sup>2</sup>
Length of cable(m)	10	10	10	10	10
QTY/20'CTN	2040pcs	2040pcs	2040pcs	2040pcs	2040pcs
QTY/40'CTN	4080pcs	4080pcs	4080pcs	4080pcs	4080pcs
QTY/40'(H)CTN	4760pcs	4760pcs	4760pcs	4760pcs	4760pcs

# Submersible Pumps

Protection Grade **IPX8**

## Main Specifications

Liquid temperature up to 35 °C  
 Protection IP X8  
 Max grain size: 5mm / 35mm



**CSPxxxC-11(A)**



**CSPxxxD-11(A)**

Product NO.	CSP250C-11(A)	CSP400C-11(A)	CSP550C-11(A)	CSP750C-11(A)	CSP900C-11(A)
Power	250W	400W	550W	750W	900W
V&Hz	230V/50Hz, 115V/60Hz	230V/50Hz, 115V/60Hz	230V/50Hz, 115V/60Hz	230V/50Hz, 115V/60Hz	230V/50Hz, 115V/60Hz
Max.pump rate(L/H)	5500	7300	11500	13000	15000
Max.height(m)	6	7.5	8.5	9.5	10
Max.depth(m)	7	7	7	7	7
Cable	H05RN-F3G0.75mm <sup>2</sup> 05RN8-F3G0.75mm <sup>2</sup>	H05RN-F3G0.75mm <sup>2</sup> 05RN8-F3G0.75mm <sup>2</sup>	H05RN-F3G0.75mm <sup>2</sup> 05RN8-F3G0.75mm <sup>2</sup>	H05RN-F3G0.75mm <sup>2</sup> 05RN8-F3G0.75mm <sup>2</sup>	H07RN-F3G1.0mm <sup>2</sup> H07RN8-F3G1.0mm <sup>2</sup>
Length of cable(m)	10	10	10	10	10
QTY/20'CTN	1800pcs	1800pcs	1800pcs	1800pcs	1800pcs
QTY/40'CTN	3600pcs	3600pcs	3600pcs	3600pcs	3600pcs
QTY/40'(H)CTN	3720pcs	3720pcs	3720pcs	3720pcs	3720pcs

Product NO.	CSP400D-11(A)	CSP550D-11(A)	CSP750D-11(A)	CSP900D-11(A)	CSP1100D-11(A)
Power	400W	550W	750W	900W	1100W
V&Hz	230V/50Hz, 115V/60Hz	230V/50Hz, 115V/60Hz	230V/50Hz, 115V/60Hz	230V/50Hz, 115V/60Hz	230V/50Hz, 115V/60Hz
Max.pump rate(L/H)	8500	12500	14000	15000	17500
Max.height(m)	5	7	8	8.5	9
Max.depth(m)	7	7	7	7	7
Cable	H05RN-F3G0.75mm <sup>2</sup> 05RN8-F3G0.75mm <sup>2</sup>	H05RN-F3G0.75mm <sup>2</sup> 05RN8-F3G0.75mm <sup>2</sup>	H05RN-F3G0.75mm <sup>2</sup> 05RN8-F3G0.75mm <sup>2</sup>	H07RN-F3G1.0mm <sup>2</sup> H07RN8-F3G1.0mm <sup>2</sup>	H07RN-F3G1.0mm <sup>2</sup> H07RN8-F3G1.0mm <sup>2</sup>
Length of cable(m)	10	10	10	10	10
QTY/20'CTN	1800pcs	1800pcs	1800pcs	1800pcs	1800pcs
QTY/40'CTN	3600pcs	3600pcs	3600pcs	3600pcs	3600pcs
QTY/40'(H)CTN	3720pcs	3720pcs	3720pcs	3720pcs	3720pcs

# Submersible Pumps

Protection Grade **IPX8**

## Main Specifications

Liquid temperature up to 35 °C  
 Protection IP X8  
 Max grain size: 5mm / 35mm



**CSPxxxC-12**



**CSPxxxD-12**

Product NO.	CSP250C-12	CSP400C-12	CSP550C-12	CSP750C-12	CSP900C-12
Power	250W	400W	550W	750W	900W
V&Hz	230V/50Hz, 115V/60Hz	230V/50Hz, 115V/60Hz	230V/50Hz, 115V/60Hz	230V/50Hz, 115V/60Hz	230V/50Hz, 115V/60Hz
Max.pump rate(L/H)	5500	7300	11500	13000	15000
Max.height(m)	6	7.5	8.5	9.5	10
Max.depth(m)	7	7	7	7	7
Cable	H05RN-F3G0.75mm <sup>2</sup> 05RN8-F3G0.75mm <sup>2</sup>	H05RN-F3G0.75mm <sup>2</sup> 05RN8-F3G0.75mm <sup>2</sup>	H05RN-F3G0.75mm <sup>2</sup> 05RN8-F3G0.75mm <sup>2</sup>	H05RN-F3G0.75mm <sup>2</sup> 05RN8-F3G0.75mm <sup>2</sup>	H07RN-F3G1.0mm <sup>2</sup> H07RN8-F3G1.0mm <sup>2</sup>
Length of cable(m)	10	10	10	10	10
QTY/20'CTN	2380pcs	2380pcs	2380pcs	2040pcs	2040pcs
QTY/40'CTN	4760pcs	4760pcs	4760pcs	4080pcs	4080pcs
QTY/40'(H)CTN	5440pcs	5440pcs	5440pcs	4760pcs	4760pcs

Product NO.	CSP400D-12	CSP550D-12	CSP750D-12	CSP900D-12	CSP1100D-12
Power	400W	550W	750W	900W	1100W
V&Hz	230V/50Hz, 115V/60Hz	230V/50Hz, 115V/60Hz	230V/50Hz, 115V/60Hz	230V/50Hz, 115V/60Hz	230V/50Hz, 115V/60Hz
Max.pump rate(L/H)	8500	12500	14000	15000	17500
Max.height(m)	5	7	8	8.5	9
Max.depth(m)	7	7	7	7	7
Cable	H05RN-F3G0.75mm <sup>2</sup> 05RN8-F3G0.75mm <sup>2</sup>	H05RN-F3G0.75mm <sup>2</sup> 05RN8-F3G0.75mm <sup>2</sup>	H05RN-F3G0.75mm <sup>2</sup> 05RN8-F3G0.75mm <sup>2</sup>	H07RN-F3G1.0mm <sup>2</sup> H07RN8-F3G1.0mm <sup>2</sup>	H07RN-F3G1.0mm <sup>2</sup> H07RN8-F3G1.0mm <sup>2</sup>
Length of cable(m)	10	10	10	10	10
QTY/20'CTN	2040pcs	2040pcs	2040pcs	2040pcs	2040pcs
QTY/40'CTN	4080pcs	4080pcs	4080pcs	4080pcs	4080pcs
QTY/40'(H)CTN	4760pcs	4760pcs	4760pcs	4760pcs	4760pcs

# Submersible Pumps

Protection Grade **IPX8**

## Main Specifications

Liquid temperature up to 35 °C  
 Protection IP X8  
 Max grain size: 1-30mm



**CSPxxxT-12**



Convertible clean water and sewage



360 ° adjustment

Product NO.	CSP400T-12	CSP550T-12	CSP750T-12	CSP900T-12	CSP1100T-12
Power	400W	550W	750W	900W	1100W
V&Hz	230V/50Hz, 115V/60Hz	230V/50Hz, 115V/60Hz	230V/50Hz, 115V/60Hz	230V/50Hz, 115V/60Hz	230V/50Hz, 115V/60Hz
Max.pump rate(L/H)	8500	12500	14000	15000	17500
Max.height(m)	5	7	8	8.5	9
Max.depth(m)	7	7	7	7	7
Cable	H05RN-F3G0.75mm <sup>2</sup> 05RN8-F3G0.75mm <sup>2</sup>	H05RN-F3G0.75mm <sup>2</sup> 05RN8-F3G0.75mm <sup>2</sup>	H05RN-F3G0.75mm <sup>2</sup> 05RN8-F3G0.75mm <sup>2</sup>	H07RN-F3G1.0mm <sup>2</sup> H07RN8-F3G1.0mm <sup>2</sup>	H07RN-F3G1.0mm <sup>2</sup> H07RN8-F3G1.0mm <sup>2</sup>
Length of cable(m)	10	10	10	10	10
QTY/20'CTN	1800pcs	1800pcs	1800pcs	1800pcs	1800pcs
QTY/40'CTN	3600pcs	3600pcs	3600pcs	3600pcs	3600pcs
QTY/40'(H)CTN	3720pcs	3720pcs	3720pcs	3720pcs	3720pcs

# Submersible Pumps

Protection Grade IPX8

## Main Specifications

Liquid temperature up to 35 °C  
 Protection IP X8  
 Max grain size: 5mm / 25mm



CSPxxxC-13



CSPxxxD-13

Product NO.	CSP250C-13	CSP400C-13
Power	250W	400W
V&Hz	230V/50Hz, 115V/60Hz	230V/50Hz, 115V/60Hz
Max.pump rate(L/H)	5500	7300
Max.height(m)	6	7.5
Max.depth(m)	7	7
Cable	H05RN-F3G0.75mm <sup>2</sup> 05RN8-F3G0.75mm <sup>2</sup>	H05RN-F3G0.75mm <sup>2</sup> 05RN8-F3G0.75mm <sup>2</sup>
Length of cable(m)	10	10
QTY/20'CTN	2548pcs	2548pcs
QTY/40'CTN	5292pcs	5292pcs
QTY/40'(H)CTN	6048pcs	6048pcs

Product NO.	CSP400D-13
Power	400W
V&Hz	230V/50Hz, 115V/60Hz
Max.pump rate(L/H)	8500
Max.height(m)	5
Max.depth(m)	7
Cable	H05RN-F3G0.75mm <sup>2</sup> 05RN8-F3G0.75mm <sup>2</sup>
Length of cable(m)	10
QTY/20'CTN	2548pcs
QTY/40'CTN	5292pcs
QTY/40'(H)CTN	6048pcs

# Submersible Pumps

Protection Grade IPX8

## Main Specifications

Liquid temperature up to 35 °C  
 Protection IP X8  
 Max grain size: 5mm / 35mm



CSPxxxC-14



CSPxxxD-14

Product NO.	CSP250C-14	CSP400C-14	CSP550C-14	CSP750C-14	CSP900C-14
Power	250W	400W	550W	750W	900W
V&Hz	230V/50Hz, 115V/60Hz	230V/50Hz, 115V/60Hz	230V/50Hz, 115V/60Hz	230V/50Hz, 115V/60Hz	230V/50Hz, 115V/60Hz
Max.pump rate(L/H)	5500	7300	11500	13000	15000
Max.height(m)	6	7.5	8.5	9.5	10
Max.depth(m)	7	7	7	7	7
Cable	H05RN-F3G0.75mm <sup>2</sup> 05RN8-F3G0.75mm <sup>2</sup>	H05RN-F3G0.75mm <sup>2</sup> 05RN8-F3G0.75mm <sup>2</sup>	H05RN-F3G0.75mm <sup>2</sup> 05RN8-F3G0.75mm <sup>2</sup>	H05RN-F3G0.75mm <sup>2</sup> 05RN8-F3G0.75mm <sup>2</sup>	H07RN-F3G1.0mm <sup>2</sup> H07RN8-F3G1.0mm <sup>2</sup>
Length of cable(m)	10	10	10	10	10
QTY/20'CTN	1800pcs	1800pcs	1800pcs	1800pcs	1800pcs
QTY/40'CTN	3600pcs	3600pcs	3600pcs	3600pcs	3600pcs
QTY/40'(H)CTN	3720pcs	3720pcs	3720pcs	3720pcs	3720pcs

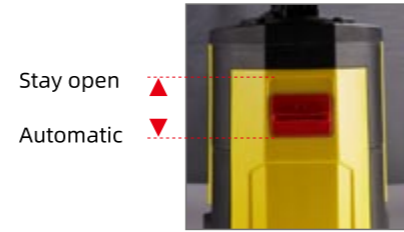
Product NO.	CSP400D-14	CSP550D-14	CSP750D-14	CSP900D-14	CSP1100D-14
Power	400W	550W	750W	900W	1100W
V&Hz	230V/50Hz, 115V/60Hz	230V/50Hz, 115V/60Hz	230V/50Hz, 115V/60Hz	230V/50Hz, 115V/60Hz	230V/50Hz, 115V/60Hz
Max.pump rate(L/H)	8500	12500	14000	15000	17500
Max.height(m)	5	7	8	8.5	9
Max.depth(m)	7	7	7	7	7
Cable	H05RN-F3G0.75mm <sup>2</sup> 05RN8-F3G0.75mm <sup>2</sup>	H05RN-F3G0.75mm <sup>2</sup> 05RN8-F3G0.75mm <sup>2</sup>	H05RN-F3G0.75mm <sup>2</sup> 05RN8-F3G0.75mm <sup>2</sup>	H07RN-F3G1.0mm <sup>2</sup> H07RN8-F3G1.0mm <sup>2</sup>	H07RN-F3G1.0mm <sup>2</sup> H07RN8-F3G1.0mm <sup>2</sup>
Length of cable(m)	10	10	10	10	10
QTY/20'CTN	1800pcs	1800pcs	1800pcs	1800pcs	1800pcs
QTY/40'CTN	3600pcs	3600pcs	3600pcs	3600pcs	3600pcs
QTY/40'(H)CTN	3720pcs	3720pcs	3720pcs	3720pcs	3720pcs

# Submersible Pumps

Protection Grade **IPX8**

## Main Specifications

Liquid temperature up to 35 °C  
 Protection IP X8  
 Max grain size: 5mm



**CSPxxxC-15**

Product NO.	CSP250C-15	CSP400C-15	CSP550C-15	CSP750C-15	CSP900C-15
Power	250W	400W	550W	750W	900W
V&Hz	230V/50Hz, 115V/60Hz	230V/50Hz, 115V/60Hz	230V/50Hz, 115V/60Hz	230V/50Hz, 115V/60Hz	230V/50Hz, 115V/60Hz
Max.pump rate(L/H)	6000	8500	12500	14000	15000
Max.height(m)	5	5.5	7	8	8.5
Max.depth(m)	7	7	7	7	7
Cable	H05RN-F3G0.75mm <sup>2</sup> 05RN8-F3G0.75mm <sup>2</sup>	H05RN-F3G0.75mm <sup>2</sup> 05RN8-F3G0.75mm <sup>2</sup>	H05RN-F3G0.75mm <sup>2</sup> 05RN8-F3G0.75mm <sup>2</sup>	H05RN-F3G0.75mm <sup>2</sup> 05RN8-F3G0.75mm <sup>2</sup>	H07RN-F3G1.0mm <sup>2</sup> H07RN8-F3G1.0mm <sup>2</sup>
Length of cable(m)	10	10	10	10	10
QTY/20'CTN	1176pcs	1176pcs	1176pcs	1176pcs	1176pcs
QTY/40'CTN	2400pcs	2400pcs	2400pcs	2400pcs	2400pcs
QTY/40'(H)CTN	2744pcs	2744pcs	2744pcs	2744pcs	2744pcs



# Submersible Pumps

Protection Grade **IPX8**

## Main Specifications

Liquid temperature up to 35 °C  
 Protection IP X8  
 Max grain size: 5mm



**CSPxxxCinox-1**



**CSPxxxCinox-2**



**CSPxxxCinox-3**

# Submersible Pumps

Protection Grade **IPX8**

## Main Specifications

Liquid temperature up to 35 °C  
 Protection IP X8  
 Max grain size: 35mm



**CSPxxxDinox-1A**



**CSPxxxDinox-2A**



**CSPxxxDinox-3A**

Product NO.	CSP400Cinox-1(2,3)	CSP550Cinox-1(2,3)	CSP750Cinox-1(2,3)	CSP900Cinox-1(2,3)
<b>Power</b>	400W	550W	750W	900W
<b>V&amp;Hz</b>	230V/50Hz, 115V/60Hz	230V/50Hz, 115V/60Hz	230V/50Hz, 115V/60Hz	230V/50Hz, 115V/60Hz
<b>Max.pump rate(L/H)</b>	7500	8500	11000	12000
<b>Max.height(m)</b>	6.5	7.5	8.5	9
<b>Max.depth(m)</b>	7	7	7	7
<b>Cable</b>	H05RN-F3G0.75mm <sup>2</sup> 05RN8-F3G0.75mm <sup>2</sup>	H05RN-F3G0.75mm <sup>2</sup> 05RN8-F3G0.75mm <sup>2</sup>	H05RN-F3G0.75mm <sup>2</sup> 05RN8-F3G0.75mm <sup>2</sup>	H07RN-F3G1.0mm <sup>2</sup> H07RN8-F3G1.0mm <sup>2</sup>
<b>Length of cable(m)</b>	10	10	10	10
<b>QTY/20'CTN</b>	2380pcs	2380pcs	2380pcs	2040pcs
<b>QTY/40'CTN</b>	4760pcs	4760pcs	4760pcs	4080pcs
<b>QTY/40'(H)CTN</b>	5440pcs	5440pcs	5440pcs	4760pcs

Product NO.	CSP400Dinox-1(2,3)A	CSP550Dinox-1(2,3)A	CSP750Dinox-1(2,3)A	CSP900Dinox-1(2,3)A	CSP1100Dinox-1(2,3)A
<b>Power</b>	400W	550W	750W	900W	1100W
<b>V&amp;Hz</b>	230V/50Hz, 115V/60Hz	230V/50Hz, 115V/60Hz	230V/50Hz, 115V/60Hz	230V/50Hz, 115V/60Hz	230V/50Hz, 115V/60Hz
<b>Max.pump rate(L/H)</b>	8500	12500	14000	15000	20000
<b>Max.height(m)</b>	5	7	8	8.5	9
<b>Max.depth(m)</b>	7	7	7	7	7
<b>Cable</b>	H05RN-F3G0.75mm <sup>2</sup> 05RN8-F3G0.75mm <sup>2</sup>	H05RN-F3G0.75mm <sup>2</sup> 05RN8-F3G0.75mm <sup>2</sup>	H05RN-F3G0.75mm <sup>2</sup> 05RN8-F3G0.75mm <sup>2</sup>	H07RN-F3G1.0mm <sup>2</sup> H07RN8-F3G1.0mm <sup>2</sup>	H07RN-F3G1.0mm <sup>2</sup> H07RN8-F3G1.0mm <sup>2</sup>
<b>Length of cable(m)</b>	10	10	10	10	10
<b>QTY/20'CTN(4A)</b>	2040pcs	2040pcs	2040pcs	2040pcs	2040pcs
<b>QTY/40'CTN(4A)</b>	4080pcs	4080pcs	4080pcs	4080pcs	4080pcs
<b>QTY/40'(H)CTN(4A)</b>	4760pcs	4760pcs	4760pcs	4760pcs	4760pcs

# Submersible Pumps

Protection Grade **IPX8**

## Main Specifications

Liquid temperature up to 35 °C  
 Protection IP X8  
 Max grain size: 20mm



**CSPxxxDinox(C)**



**CSPxxxDinox(B)**



**CSPxxxDinox(A)**

Product NO.	CSP400Dinox(A,B,C)	CSP550Dinox(A,B,C)	CSP750Dinox(A,B,C)	CSP900Dinox(A,B,C)	CSP1100Dinox(A,B,C)
<b>Power</b>	400W	550W	750W	900W	1100W
<b>V&amp;Hz</b>	230V/50Hz, 115V/60Hz	230V/50Hz, 115V/60Hz	230V/50Hz, 115V/60Hz	230V/50Hz, 115V/60Hz	230V/50Hz, 115V/60Hz
<b>Max.pump rate(L/H)</b>	8500	12500	14000	15000	20000
<b>Max.height(m)</b>	5	7	8	8.5	9
<b>Max.depth(m)</b>	7	7	7	7	7
<b>Cable</b>	H05RN-F3G0.75mm <sup>2</sup> 05RN8-F3G0.75mm <sup>2</sup>	H05RN-F3G0.75mm <sup>2</sup> 05RN8-F3G0.75mm <sup>2</sup>	H05RN-F3G0.75mm <sup>2</sup> 05RN8-F3G0.75mm <sup>2</sup>	H07RN-F3G1.0mm <sup>2</sup> H07RN8-F3G1.0mm <sup>2</sup>	H07RN-F3G1.0mm <sup>2</sup> H07RN8-F3G1.0mm <sup>2</sup>
<b>Length of cable(m)</b>	10	10	10	10	10
<b>QTY/20'CTN(4A)</b>	1800pcs	1800pcs	1800pcs	1800pcs	1800pcs
<b>QTY/40'CTN(4A)</b>	3720pcs	3720pcs	3720pcs	3720pcs	3720pcs
<b>QTY/40'(H)CTN(4A)</b>	4340pcs	4340pcs	4340pcs	4340pcs	4340pcs

# Submersible Pumps

Protection Grade **IPX8**

## Main Specifications

Liquid temperature up to 35 °C  
 Protection IP X8  
 Max grain size: 35mm



**CSPxxxDinox-5**



360 ° adjustment

Product NO.	CSP400Dinox-5	CSP550Dinox-5	CSP750Dinox-5	CSP900Dinox-5	CSP1100Dinox-5
<b>Power</b>	400W	550W	750W	900W	1100W
<b>V&amp;Hz</b>	230V/50Hz, 115V/60Hz	230V/50Hz, 115V/60Hz	230V/50Hz, 115V/60Hz	230V/50Hz, 115V/60Hz	230V/50Hz, 115V/60Hz
<b>Max.pump rate(L/H)</b>	8500	12500	14000	15000	20000
<b>Max.height(m)</b>	5	7	8	8.5	9
<b>Max.depth(m)</b>	7	7	7	7	7
<b>Cable</b>	H05RN-F3G0.75mm <sup>2</sup> 05RN8-F3G0.75mm <sup>2</sup>	H05RN-F3G0.75mm <sup>2</sup> 05RN8-F3G0.75mm <sup>2</sup>	H05RN-F3G0.75mm <sup>2</sup> 05RN8-F3G0.75mm <sup>2</sup>	H07RN-F3G1.0mm <sup>2</sup> H07RN8-F3G1.0mm <sup>2</sup>	H07RN-F3G1.0mm <sup>2</sup> H07RN8-F3G1.0mm <sup>2</sup>
<b>Length of cable(m)</b>	10	10	10	10	10
<b>QTY/20'CTN(4A)</b>	1560pcs	1560pcs	1560pcs	1560pcs	1560pcs
<b>QTY/40'CTN(4A)</b>	3240pcs	3240pcs	3240pcs	3240pcs	3240pcs
<b>QTY/40'(H)CTN(4A)</b>	3600pcs	3600pcs	3600pcs	3600pcs	3600pcs



# Submersible Pumps

Protection Grade **IPX8**

## Main Specifications

Liquid temperature up to 35 °C  
 Protection IP X8  
 Max grain size: 5mm / 35mm



**CSPxxxC-4(1)A**



**CSPxxxD-4(1)A**

Product NO.	CSP250C-4(1)A	CSP400C-4(1)A	CSP550C-4(1)A	CSP750C-4(1)A	CSP900C-4(1)A
Power	250W	400W	550W	750W	900W
V&Hz	230V/50Hz, 115V/60Hz	230V/50Hz, 115V/60Hz	230V/50Hz, 115V/60Hz	230V/50Hz, 115V/60Hz	230V/50Hz, 115V/60Hz
Max.pump rate(L/H)	5500	7300	11500	13000	15000
Max.height(m)	6	7.5	8.5	9.5	10
Max.depth(m)	7	7	7	7	7
Cable	H05RN-F3G0.75mm <sup>2</sup> 05RN8-F3G0.75mm <sup>2</sup>	H05RN-F3G0.75mm <sup>2</sup> 05RN8-F3G0.75mm <sup>2</sup>	H05RN-F3G0.75mm <sup>2</sup> 05RN8-F3G0.75mm <sup>2</sup>	H05RN-F3G0.75mm <sup>2</sup> 05RN8-F3G0.75mm <sup>2</sup>	H07RN-F3G1.0mm <sup>2</sup> H07RN8-F3G1.0mm <sup>2</sup>
Length of cable(m)	10	10	10	10	10
QTY/20'CTN	2380pcs	2380pcs	2380pcs	2040pcs	2040pcs
QTY/40'CTN	4760pcs	4760pcs	4760pcs	4080pcs	4080pcs
QTY/40'(H)CTN	5440pcs	5440pcs	5440pcs	4760pcs	4760pcs

Product NO.	CSP400D-4(1)A	CSP550D-4(1)A	CSP750D-4(1)A	CSP900D-4(1)A	CSP1100D-4(1)A
Power	400W	550W	750W	900W	1100W
V&Hz	230V/50Hz, 115V/60Hz	230V/50Hz, 115V/60Hz	230V/50Hz, 115V/60Hz	230V/50Hz, 115V/60Hz	230V/50Hz, 115V/60Hz
Max.pump rate(L/H)	8500	12500	14000	15000	17500
Max.height(m)	5	7	8	8.5	9
Max.depth(m)	7	7	7	7	7
Cable	H05RN-F3G0.75mm <sup>2</sup> 05RN8-F3G0.75mm <sup>2</sup>	H05RN-F3G0.75mm <sup>2</sup> 05RN8-F3G0.75mm <sup>2</sup>	H05RN-F3G0.75mm <sup>2</sup> 05RN8-F3G0.75mm <sup>2</sup>	H07RN-F3G1.0mm <sup>2</sup> H07RN8-F3G1.0mm <sup>2</sup>	H07RN-F3G1.0mm <sup>2</sup> H07RN8-F3G1.0mm <sup>2</sup>
Length of cable(m)	10	10	10	10	10
QTY/20'CTN	2040pcs	2040pcs	2040pcs	2040pcs	2040pcs
QTY/40'CTN	4080pcs	4080pcs	4080pcs	4080pcs	4080pcs
QTY/40'(H)CTN	4760pcs	4760pcs	4760pcs	4760pcs	4760pcs

# Submersible Pumps

Protection Grade **IPX8**

## Main Specifications

Liquid temperature up to 35 °C  
 Protection IP X8  
 Max grain size: 5mm



**CSPxxxC-4(1)B**



**Water pump minimum working water level 2mm**

Product NO.	CSP250C-4(1)B	CSP400C-4(1)B
Power	250W	400W
V&Hz	230V/50Hz, 115V/60Hz	230V/50Hz, 115V/60Hz
Max.pump rate(L/H)	5000	7300
Max.height(m)	5.5	7
Max.depth(m)	7	7
Cable	H05RN-F3G0.75mm <sup>2</sup> 05RN8-F3G0.75mm <sup>2</sup>	H05RN-F3G0.75mm <sup>2</sup> 05RN8-F3G0.75mm <sup>2</sup>
Length of cable(m)	10	10
QTY/20'CTN	840pcs	840pcs
QTY/40'CTN	1680pcs	1680pcs
QTY/40'(H)CTN	1896pcs	1896pcs

# Submersible Pumps

Protection Grade **IPX8**

## Main Specifications

Liquid temperature up to 35 °C  
 Protection IP X8  
 Max grain size: 1mm

**HIGH LIFT  
 LONG LIFE  
 HIGH QUALITY  
 INTELLIGENCE**



**CSPxxxCinox-H**



**CSPxxxC-H**



**CSPxxxCinox-H B**

Product NO.	CSP1000C-H / CSP1000Cinox-H	CSP1200C-H / CSP1200Cinox-H
Power	1000W	1200W
V&Hz	230V/50Hz, 115V/60Hz	230V/50Hz, 115V/60Hz
Max.pump rate(L/H)	5500	6000
Max.height(m)	30	40
Max.depth(m)	12	12
Cable	H07RN-F3G1.0mm <sup>2</sup> H07RN8-F3G1.0mm <sup>2</sup>	H07RN-F3G1.0mm <sup>2</sup> H07RN8-F3G1.0mm <sup>2</sup>
Length of cable(m)	15	15
QTY/20'CTN	1080pcs	1080pcs
QTY/40'CTN	2192pcs	2192pcs
QTY/40'(H)CTN	2564pcs	2564pcs

# Submersible Pumps

Protection Grade **IPX8**

## Main Specifications

Liquid temperature up to 35 °C  
 Protection IP X8  
 Max grain size: 1mm

**HIGH LIFT  
 LONG LIFE  
 HIGH QUALITY**



**CSPxxxC-HF1**



**CSPxxxCinox-HF1**



**CSPxxxDinox-HF**

**HIGH FLOW  
 LONG LIFE  
 HIGH QUALITY**

Product NO.	CSP850C(inox)HF1	CSP1000C(inox)HF1	CSP1200C(inox)HF1
Power	850W	1000W	1200W
V&Hz	230V/50Hz, 115V/60Hz	230V/50Hz, 115V/60Hz	230V/50Hz, 115V/60Hz
Max.pump rate(L/H)	5000	5500	6000
Max.height(m)	20	30	40
Max.depth(m)	7	7	12
Cable	H07RN-F3G1.0mm <sup>2</sup> H07RN8-F3G1.0mm <sup>2</sup>	H07RN-F3G1.0mm <sup>2</sup> H07RN8-F3G1.0mm <sup>2</sup>	H07RN-F3G1.0mm <sup>2</sup> H07RN8-F3G1.0mm <sup>2</sup>
Length of cable(m)	10	10	15
QTY/20'CTN	880pcs	880pcs	880pcs
QTY/40'CTN	1760pcs	1760pcs	1760pcs
QTY/40'(H)CTN	2200pcs	2200pcs	2200pcs

Product NO.	CSP850Dinox-HF	CSP1000Dinox-HF
Power	850W	1000W
V&Hz	230V/50Hz, 115V/60Hz	230V/50Hz, 115V/60Hz
Max.pump rate(L/H)	22000	25000
Max.height(m)	11	12
Max.depth(m)	7	7
Cable	H07RN-F3G1.0mm <sup>2</sup> H07RN8-F3G1.0mm <sup>2</sup>	H07RN-F3G1.0mm <sup>2</sup> H07RN8-F3G1.0mm <sup>2</sup>
Length of cable(m)	10	10
QTY/20'CTN	880pcs	880pcs
QTY/40'CTN	1760pcs	1760pcs
QTY/40'(H)CTN	2200pcs	2200pcs

# Submersible Pumps

Protection Grade **IPX8**

## Main Specifications

Liquid temperature up to 35 °C  
 Protection IP X8  
 Max grain size: 5mm



**SPxxxC-1**



**SPxxxC-1 B**

Product NO.	SP400C-1	SP550C-1
Power	1/4HP	1/3HP
V&Hz	120/60	120/60
Max.pump rate(GPH)	1850	2500
Max.height (Ft)	25	27
Cable	18AWG	18AWG
Length of cable(m)	3	3
QTY/20'CTN	2380pcs	2380pcs
QTY/40'CTN	4760pcs	4760pcs
QTY/40'(H)CTN	5440pcs	5440pcs

Product NO.	SP400C-1	SP550C-1
Power	200W	280W
V&Hz	230/50	230/50
Max.pump rate(L/H)	5000	7500
Max.height (m)	5	5.5
Cable	H05RN-F3G0.75mm <sup>2</sup>	H05RN-F3G0.75mm <sup>2</sup>
Length of cable(m)	3	3
QTY/20'CTN	2380pcs	2380pcs
QTY/40'CTN	4760pcs	4760pcs
QTY/40'(H)CTN	5440pcs	5440pcs

# Submersible Pumps

Protection Grade **IPX8**

## Main Specifications

Liquid temperature up to 35 °C  
 Protection IP X8  
 Max grain size: 5mm



**SPxxxC-2**



**SPxxxC-2E**

Product NO.	SP400C-2(2E)	SP550C-2(2E)	SP750C-2(2E)
Power	1/4HP	1/3HP	1/2HP
V&Hz	120/60	120/60	120/60
Max.pump rate(GPH)	1850	2500	2650
Max.height (Ft)	25	27	32
Cable	18AWG	18AWG	18AWG
Length of cable(m)	3	3	3
QTY/20'CTN	2100pcs/1540pcs	2100pcs/1540pcs	2100pcs/1540pcs
QTY/40'CTN	4200pcs/3080pcs	4200pcs/3080pcs	4200pcs/3080pcs
QTY/40'(H)CTN	4800pcs/3520pcs	4800pcs/3520pcs	4800pcs/3520pcs

Product NO.	SP400C-2(2E)	SP550C-2(2E)	SP750C-2(2E)
Power	200W	280W	400W
V&Hz	230/50	230/50	230/50
Max.pump rate(L/H)	5000	7500	10000
Max.height (m)	6.5	8.5	10
Cable	H05RN-F3G0.75mm <sup>2</sup>	H05RN-F3G0.75mm <sup>2</sup>	H05RN-F3G0.75mm <sup>2</sup>
Length of cable(m)	3	3	3
QTY/20'CTN	2100pcs/1540pcs	2100pcs/1540pcs	2100pcs/1540pcs
QTY/40'CTN	4200pcs/3080pcs	4200pcs/3080pcs	4200pcs/3080pcs
QTY/40'(H)CTN	4800pcs/3520pcs	4800pcs/3520pcs	4800pcs/3520pcs

# Submersible Pumps

Protection Grade **IPX8**

## Main Specifications

Liquid temperature up to 35 °C  
 Protection IP X8  
 Max grain size: 5mm



**SPxxxLCinox-3A**



**SPxxxCinox-3B**

# Submersible Pumps

Protection Grade **IPX8**

## Main Specifications

Liquid temperature up to 35 °C  
 Protection IP X8  
 Max grain size: 5mm



**SPxxxC-4A**



**SPxxxC-4B**



**SPxxxC-4**

Product NO.	SP750Cinox-3(A,B)	SP900Cinox-3(A,B)	SP1100Cinox-3(A,B)
Power	1/2HP	3/4HP	1HP
V&Hz	120/60	120/60	120/60
Max.pump rate(GPH)	3950	4250	4750
Max.height (Ft)	25	27	32
Cable	18AWG	18AWG	18AWG
Length of cable(m)	3	3	3
QTY/20'CTN	1540pcs	1540pcs	1540pcs
QTY/40'CTN	3080pcs	3080pcs	3080pcs
QTY/40'(H)CTN	3520pcs	3520pcs	3520pcs

Product NO.	SP750Cinox-3(A,B)	SP900Cinox-3(A,B)	SP1100Cinox-3(A,B)
Power	400W	560W	750W
V&Hz	230/50	230/50	230/50
Max.pump rate(L/H)	15000	16000	18000
Max.height (m)	7.5	8	9.5
Cable	H07RN-F3G1.0mm <sup>2</sup>	H07RN-F3G1.0mm <sup>2</sup>	H07RN-F3G1.0mm <sup>2</sup>
Length of cable(m)	3	3	3
QTY/20'CTN	1540pcs	1540pcs	1540pcs
QTY/40'CTN	3080pcs	3080pcs	3080pcs
QTY/40'(H)CTN	3520pcs	3520pcs	3520pcs

Product NO.	SP550C-4(A,B)	SP750C-4(A,B)
Power	1/3HP	1/2HP
V&Hz	120/60	120/60
Max.pump rate(GPH)	2700	3300
Max.height (Ft)	25	28
Cable	18AWG	18AWG
Length of cable(m)	3	3
QTY/20'CTN	1540pcs	1540pcs
QTY/40'CTN	3080pcs	3080pcs
QTY/40'(H)CTN	3520pcs	3520pcs

Product NO.	SP550C-4(A,B)	SP750C-4(A,B)
Power	280W	400W
V&Hz	230/50	230/50
Max.pump rate(L/H)	10500	12500
Max.height (m)	7.5	8.5
Cable	H05RN-F3G0.75mm <sup>2</sup>	H05RN-F3G0.75mm <sup>2</sup>
Length of cable(m)	3	3
QTY/20'CTN	1540pcs	1540pcs
QTY/40'CTN	3080pcs	3080pcs
QTY/40'(H)CTN	3520pcs	3520pcs

# Submersible Pumps

Protection Grade **IPX8**

## Main Specifications

Liquid temperature up to 35 °C  
 Protection IP X8  
 Max grain size: 5mm



**SPxxxC-5E**

Product NO.	SP400C-5E	SP550C-5E
Power	1/4HP	1/3HP
V&Hz	120/60	120/60
Max.pump rate(GPH)	1850	2500
Max.height (Ft)	25	27
Cable	18AWG	18AWG
Length of cable(m)	5	5
QTY/20'CTN	1540pcs	1540pcs
QTY/40'CTN	3080pcs	3080pcs
QTY/40'(H)CTN	3520pcs	3520pcs

Product NO.	SP400C-5E	SP550C-5E
Power	200W	280W
V&Hz	230/50	230/50
Max.pump rate(L/H)	5000	7500
Max.height (m)	5	5.5
Cable	H05RN-F3G0.75mm <sup>2</sup>	H05RN-F3G0.75mm <sup>2</sup>
Length of cable(m)	5	5
QTY/20'CTN	1540pcs	1540pcs
QTY/40'CTN	3080pcs	3080pcs
QTY/40'(H)CTN	3520pcs	3520pcs

# Macerator pumps

Protection Grade **IPX5**



**CDP450-1/CDP650-1**

**CDP250-3/CDP400-3/CDP550-3**

**CDP400-2 / CDP600-2**

Product NO.	CDP450-1 / CDP650-1	CDP400-2 / CDP600-2	CDP250-3 / CDP400-3 / CDP550-3
Power	450W / 650W	400W / 600W	250W / 400W / 550W
V&Hz	220V-240V / 50Hz	220V-240V / 50Hz	220V-240V / 50Hz
Max.height(m)	8m / 10m	7m/9m	6m/7m/8m
Max.Flow Distance	70m / 90m	70m / 80m	50m / 70m / 80m
Max.Flow	200l/m 300l/m	180l/m 300l/m	150l/m 180l/m 280l/m
Dia.Of Pipe	23mm 28mm 32mm	23mm 28mm 32mm	23mm 28mm 32mm
QTY/20'CTN	810pcs	810pcs	/
QTY/40'CTN	1620pcs	1620pcs	/
QTY/40'(H)CTN	1920pcs	1920pcs	/

## JET Pumps

### Main Specifications

Max. suction head: 8m  
Max. liquid temperature: 35 °C  
Protection IPX4



CGPxxxA-7E



CGPXXXA-7C



CGPxxxA-7



# JET Pumps

Protection Grade **IPX4**

## Main Specifications

Max. suction head: 8m  
Max. liquid temperature: 35 °C  
Protection IPX4



CGPxxx-7J



CGPxxxinox-7JE



CGPxxxA-7J



CGPxxxA-7JC



CGPxxxB-7JC



CGPxxxA-7JCS



CGPxxxinox-7JCS

# JET Pumps

Protection Grade **IPX4**

## Main Specifications

Max. suction head: 8m  
Max. liquid temperature: 35 °C  
Protection IPX4



CGPxxx-7



CGPxxxB-7



CGPxxxinox-7



CGPxxxinox-7C



CGPxxxB-7C

Product NO.	CGP600(inox,A,B)-7J	CGP800(inox,A,B)-7J	CGP1000(inox,A,B)-7J	CGP1200(inox,A,B)-7J
Power	600W	800W	1000W	1200W
V&Hz	230V/50Hz, 115V/60Hz	230V/50Hz, 115V/60Hz	230V/50Hz, 115V/60Hz	230V/50Hz, 115V/60Hz
Max.pump rate(L/H)	3000	3200	3500	3800
Max.height(m)	35	40	44	48
Max.depth(m)	8	8	8	8
Dia.of pipe	1"	1"	1"	1"
Cable	H07RN-F3G1.0mm <sup>2</sup>	H07RN-F3G1.0mm <sup>2</sup>	H07RN-F3G1.0mm <sup>2</sup>	H07RN-F3G1.0mm <sup>2</sup>
Length of cable(m)	1.2	1.2	1.2	1.2
QTY/20'CTN	1500pcs	1500pcs	1500pcs	1500pcs
QTY/40'CTN	3100pcs	3100pcs	3100pcs	3100pcs
QTY/40'(H)CTN	3410pcs	3410pcs	3410pcs	3410pcs

Product NO.	CGP600(inox,A,B)-7JC(S)	CGP800(inox,A,B)-7JC(S)	CGP1000(inox,A,B)-7JC(S)	CGP1200(inox,A,B)-7JC(S)
Power	600W	800W	1000W	1200W
V&Hz	230V/50Hz, 115V/60Hz	230V/50Hz, 115V/60Hz	230V/50Hz, 115V/60Hz	230V/50Hz, 115V/60Hz
Max.pump rate(L/H)	3000	3200	3500	3800
Max.height(m)	35	40	44	48
Max.depth(m)	8	8	8	8
Dia.of pipe	1"	1"	1"	1"
Cable	H07RN-F3G1.0mm <sup>2</sup>	H07RN-F3G1.0mm <sup>2</sup>	H07RN-F3G1.0mm <sup>2</sup>	H07RN-F3G1.0mm <sup>2</sup>
Length of cable(m)	1.2	1.2	1.2	1.2
QTY/20'CTN	384pcs	384pcs	384pcs	384pcs
QTY/40'CTN	800pcs	800pcs	800pcs	800pcs
QTY/40'(H)CTN	900pcs	900pcs	900pcs	900pcs

Product NO.	CGP600(inox,A,B)-7	CGP800(inox,A,B)-7	CGP1000(inox,A,B)-7	CGP1200(inox,A,B)-7
Power	600W	800W	1000W	1200W
V&Hz	230V/50Hz, 115V/60Hz	230V/50Hz, 115V/60Hz	230V/50Hz, 115V/60Hz	230V/50Hz, 115V/60Hz
Max.pump rate(L/H)	3000	3200	3500	3800
Max.height(m)	35	40	44	48
Max.depth(m)	8	8	8	8
Dia.of pipe	1"	1"	1"	1"
Cable	H07RN-F3G1.0mm <sup>2</sup>	H07RN-F3G1.0mm <sup>2</sup>	H07RN-F3G1.0mm <sup>2</sup>	H07RN-F3G1.0mm <sup>2</sup>
Length of cable(m)	1.2	1.2	1.2	1.2
QTY/20'CTN	1500pcs	1500pcs	1500pcs	1500pcs
QTY/40'CTN	3100pcs	3100pcs	3100pcs	3100pcs
QTY/40'(H)CTN	3410pcs	3410pcs	3410pcs	3410pcs

Product NO.	CGP600(inox,A,B)-7C(S)	CGP800(inox,A,B)-7C(S)	CGP1000(inox,A,B)-7C(S)	CGP1200(inox,A,B)-7C(S)
Power	600W	800W	1000W	1200W
V&Hz	230V/50Hz, 115V/60Hz	230V/50Hz, 115V/60Hz	230V/50Hz, 115V/60Hz	230V/50Hz, 115V/60Hz
Max.pump rate(L/H)	3000	3200	3500	3800
Max.height(m)	35	40	44	48
Max.depth(m)	8	8	8	8
Dia.of pipe	1"	1"	1"	1"
Cable	H07RN-F3G1.0mm <sup>2</sup>	H07RN-F3G1.0mm <sup>2</sup>	H07RN-F3G1.0mm <sup>2</sup>	H07RN-F3G1.0mm <sup>2</sup>
Length of cable(m)	1.2	1.2	1.2	1.2
QTY/20'CTN	384pcs	384pcs	384pcs	384pcs
QTY/40'CTN	800pcs	800pcs	800pcs	800pcs
QTY/40'(H)CTN	900pcs	900pcs	900pcs	900pcs

# JET Pumps

Protection Grade **IPX4**

## Main Specifications

Max. suction head: 8m  
 Max. liquid temperature: 35 °C  
 Protection IPX4



**CGPxxx-1JC**



**CGPxxxinox-1J**



**CGPxxxinox-1J B**



**CGPxxxinox-1JD**



**CGPxxxinox-1JDS**

Product NO.	CGP600(inox)-1J(E)	CGP800(inox)-1J(E)	CGP1000(inox)-1J(E)	CGP1200(inox)-1J(E)
Power	600W	800W	1000W	1200W
V&Hz	230V/50Hz, 115V/60Hz	230V/50Hz, 115V/60Hz	230V/50Hz, 115V/60Hz	230V/50Hz, 115V/60Hz
Max.pump rate(L/H)	3000	3200	3500	3800
Max.height(m)	35	40	44	48
Max.depth(m)	8	8	8	8
Dia.of pipe	1"	1"	1"	1"
Cable	H07RN-F3G1.0mm <sup>2</sup>	H07RN-F3G1.0mm <sup>2</sup>	H07RN-F3G1.0mm <sup>2</sup>	H07RN-F3G1.0mm <sup>2</sup>
Length of cable(m)	1.2	1.2	1.2	1.2
QTY/20'CTN(E)	1404pcs(990pcs)	1404pcs(990pcs)	1404pcs(990pcs)	1404pcs(990pcs)
QTY/40'CTN(E)	2880pcs(2070pcs)	2880pcs(2070pcs)	2880pcs(2070pcs)	2880pcs(2070pcs)
QTY/40'(H)CTN(E)	3200pcs(2300pcs)	3200pcs(2300pcs)	3200pcs(2300pcs)	3200pcs(2300pcs)

Product NO.	CGP600(inox)-1JC(1JD,1JCS,1JDS)	CGP800(inox)-1JC(1JD,1JCS,1JDS)	CGP1000(inox)-1JC(1JD,1JCS,1JDS)	CGP1200(inox)-1JC(1JD,1JCS,1JDS)
Power	600W	800W	1000W	1200W
V&Hz	230V/50Hz, 115V/60Hz	230V/50Hz, 115V/60Hz	230V/50Hz, 115V/60Hz	230V/50Hz, 115V/60Hz
Max.pump rate(L/H)	3000	3200	3500	3800
Max.height(m)	35	40	44	48
Max.depth(m)	8	8	8	8
Work. pressure	1.5~2.8Bar	1.5~3.0Bar	1.5~3.0Bar	1.5~3.0Bar
Dia.of pipe	1"	1"	1"	1"
Cable	H07RN-F3G1.0mm <sup>2</sup>	H07RN-F3G1.0mm <sup>2</sup>	H07RN-F3G1.0mm <sup>2</sup>	H07RN-F3G1.0mm <sup>2</sup>
Length of cable(m)	1.2	1.2	1.2	1.2
QTY/20'CTN	384pcs	384pcs	384pcs	384pcs
QTY/40'CTN	800pcs	800pcs	800pcs	800pcs
QTY/40'(H)CTN	900pcs	900pcs	900pcs	900pcs

# JET Pumps

Protection Grade **IPX4**

## Main Specifications

Max. suction head: 8m  
 Max. liquid temperature: 35 °C  
 Protection IPX4



**CGPxxx-2J**



**CGPxxxinox-2J**



**CGPxxx-2JC**



**CGPxxx-2JD**

Product NO.	CGP600(inox)-2J(E)	CGP800(inox)-2J(E)	CGP1000(inox)-2J(E)	CGP1200(inox)-2J(E)
Power	600W	800W	1000W	1200W
V&Hz	230V/50Hz, 115V/60Hz	230V/50Hz, 115V/60Hz	230V/50Hz, 115V/60Hz	230V/50Hz, 115V/60Hz
Max.pump rate(L/H)	3000	3200	3500	3800
Max.height(m)	35	40	44	48
Max.depth(m)	8	8	8	8
Dia.of pipe	1"	1"	1"	1"
Cable	H07RN-F3G1.0mm <sup>2</sup>	H07RN-F3G1.0mm <sup>2</sup>	H07RN-F3G1.0mm <sup>2</sup>	H07RN-F3G1.0mm <sup>2</sup>
Length of cable(m)	1.2	1.2	1.2	1.2
QTY/20'CTN(E)	1500pcs(1140pcs)	1500pcs(1140pcs)	1500pcs(1140pcs)	1500pcs(1140pcs)
QTY/40'CTN(E)	3100pcs(2340pcs)	3100pcs(2340pcs)	3100pcs(2340pcs)	3100pcs(2340pcs)
QTY/40'(H)CTN(E)	3410pcs(2570pcs)	3410pcs(2570pcs)	3410pcs(2570pcs)	3410pcs(2570pcs)

Product NO.	CGP600(inox)-2JC(2JD,2JCS,2JDS)	CGP800(inox)-2JC(2JD,2JCS,2JDS)	CGP1000(inox)-2JC(2JD,2JCS,2JDS)	CGP1200(inox)-2JC(2JD,2JCS,2JDS)
Power	600W	800W	1000W	1200W
V&Hz	230V/50Hz, 115V/60Hz	230V/50Hz, 115V/60Hz	230V/50Hz, 115V/60Hz	230V/50Hz, 115V/60Hz
Max.pump rate(L/H)	3000	3200	3500	3800
Max.height(m)	35	40	44	48
Max.depth(m)	8	8	8	8
Work. pressure	1.5~2.8Bar	1.5~3.0Bar	1.5~3.0Bar	1.5~3.0Bar
Dia.of pipe	1"	1"	1"	1"
Cable	H07RN-F3G1.0mm <sup>2</sup>	H07RN-F3G1.0mm <sup>2</sup>	H07RN-F3G1.0mm <sup>2</sup>	H07RN-F3G1.0mm <sup>2</sup>
Length of cable(m)	1.2	1.2	1.2	1.2
QTY/20'CTN	384pcs	384pcs	384pcs	384pcs
QTY/40'CTN	800pcs	800pcs	800pcs	800pcs
QTY/40'(H)CTN	900pcs	900pcs	900pcs	900pcs



# JET Pumps

Protection Grade IPX4

## Main Specifications

Max. suction head: 8m  
Max. liquid temperature: 35 °C  
Protection IPX4



CGPxxx-3J



CGPxxxinox-3J



CGPxxx-3JC



CGPxxxinox-3CS



CGPxxxinox-3

Product NO.	CGP600(inox)-3J(E)	CGP800(inox)-3J(E)	CGP1000(inox)-3J(E)	CGP1200(inox)-3J(E)
Power	600W	800W	1000W	1200W
V&Hz	230V/50Hz, 115V/60Hz	230V/50Hz, 115V/60Hz	230V/50Hz, 115V/60Hz	230V/50Hz, 115V/60Hz
Max.pump rate(L/H)	3000	3200	3500	3800
Max.height(m)	35	40	44	48
Max.depth(m)	8	8	8	8
Dia.of pipe	1"	1"	1"	1"
Cable	H07RN-F3G1.0mm <sup>2</sup>	H07RN-F3G1.0mm <sup>2</sup>	H07RN-F3G1.0mm <sup>2</sup>	H07RN-F3G1.0mm <sup>2</sup>
Length of cable(m)	1.2	1.2	1.2	1.2
QTY/20'CTN(E)	1404pcs(990pcs)	1404pcs(990pcs)	1404pcs(990pcs)	1404pcs(990pcs)
QTY/40'CTN(E)	2880pcs(2070pcs)	2880pcs(2070pcs)	2880pcs(2070pcs)	2880pcs(2070pcs)
QTY/40'(H)CTN(E)	3200pcs(2300pcs)	3200pcs(2300pcs)	3200pcs(2300pcs)	3200pcs(2300pcs)

Product NO.	CGP600(inox)-3JC(3JD,3JCS,CJDS)	CGP800(inox)-3JC(3JD,3JCS,3JDS)	CGP1000(inox)-3JC(3JD,3JCS,3JDS)	CGP1200(inox)-3C(3D,3CS,CDS)
Power	600W	800W	1000W	1200W
V&Hz	230V/50Hz, 115V/60Hz	230V/50Hz, 115V/60Hz	230V/50Hz, 115V/60Hz	230V/50Hz, 115V/60Hz
Max.pump rate(L/H)	3000	3200	3500	3800
Max.height(m)	35	40	44	48
Max.depth(m)	8	8	8	8
Work. pressure	1.5~2.8Bar	1.5~3.0Bar	1.5~3.0Bar	1.5~3.0Bar
Dia.of pipe	1"	1"	1"	1"
Cable	H07RN-F3G1.0mm <sup>2</sup>	H07RN-F3G1.0mm <sup>2</sup>	H07RN-F3G1.0mm <sup>2</sup>	H07RN-F3G1.0mm <sup>2</sup>
Length of cable(m)	1.2	1.2	1.2	1.2
QTY/20'CTN	384pcs	384pcs	384pcs	384pcs
QTY/40'CTN	800pcs	800pcs	800pcs	800pcs
QTY/40'(H)CTN	900pcs	900pcs	900pcs	900pcs

# JET Pumps

Protection Grade IPX4

## Main Specifications

Max. suction head: 8m  
Max. liquid temperature: 35 °C  
Protection IPX4



CGPxxx-4



CGPxxxinox-4



CGPxxx-4C



CGPxxxinox-4C

Product NO.	CGP600(inox)-4(E)	CGP800(inox)--4(E)	CGP1000(inox)--4(E)	CGP1200(inox)--4(E)
Power	600W	800W	1000W	1200W
V&Hz	230V/50Hz, 115V/60Hz	230V/50Hz, 115V/60Hz	230V/50Hz, 115V/60Hz	230V/50Hz, 115V/60Hz
Max.pump rate(L/H)	3000	3200	3500	3800
Max.height(m)	35	40	44	48
Max.depth(m)	8	8	8	8
Dia.of pipe	1"	1"	1"	1"
Cable	H07RN-F3G1.0mm <sup>2</sup>	H07RN-F3G1.0mm <sup>2</sup>	H07RN-F3G1.0mm <sup>2</sup>	H07RN-F3G1.0mm <sup>2</sup>
Length of cable(m)	1.2	1.2	1.2	1.2
QTY/20'CTN	2028pcs	2028pcs	2028pcs	2028pcs
QTY/40'CTN	4108pcs	4108pcs	4108pcs	4108pcs
QTY/40'(H)CTN	4418pcs	4418pcs	4418pcs	4418pcs

Product NO.	CGP600(inox)-4C	CGP800(inox)-4C	CGP1000(inox)-4C	CGP1200(inox)-4C
Power	600W	800W	1000W	1200W
V&Hz	230V/50Hz, 115V/60Hz	230V/50Hz, 115V/60Hz	230V/50Hz, 115V/60Hz	230V/50Hz, 115V/60Hz
Max.pump rate(L/H)	3000	3200	3500	3800
Max.height(m)	35	40	44	48
Max.depth(m)	8	8	8	8
Work. pressure	1.5~2.8Bar	1.5~3.0Bar	1.5~3.0Bar	1.5~3.0Bar
Dia.of pipe	1"	1"	1"	1"
Cable	H07RN-F3G1.0mm <sup>2</sup>	H07RN-F3G1.0mm <sup>2</sup>	H07RN-F3G1.0mm <sup>2</sup>	H07RN-F3G1.0mm <sup>2</sup>
Length of cable(m)	1.2	1.2	1.2	1.2
QTY/20'CTN	404pcs	404pcs	404pcs	404pcs
QTY/40'CTN	832pcs	832pcs	832pcs	832pcs
QTY/40'(H)CTN	937pcs	937pcs	937pcs	937pcs

# JET Pumps

Protection Grade **IPX4**

## Main Specifications

Max. suction head: 8m  
Max. liquid temperature: 35 °C  
Protection IPX4



**CGPxxxinox-5 (A)**



**CGPxxxinox-5C**



**CGPxxxinox-5CS (A)**

# JET Pumps

Protection Grade **IPX4**



**CGPxxx-6**

**CGPxxx-6 (A)**

**CGPxxx-6 (B)**



**CGPxxxinox-6C**

## Main Specifications

Max. suction head: 8m  
Max. liquid temperature: 35 °C  
Protection IPX4



**CGPxxxinox-6**



**CGPxxxinox-6CS**

Product NO.	CGP600inox-5(A)	CGP800inox-5(A)	CGP1000inox-5(A)	CGP1200inox-5(A)
Power	600W	800W	1000W	1200W
V&Hz	230V/50Hz, 115V/60Hz	230V/50Hz, 115V/60Hz	230V/50Hz, 115V/60Hz	230V/50Hz, 115V/60Hz
Max.pump rate(L/H)	3000	3200	3500	3800
Max.height(m)	35	40	44	48
Max.depth(m)	8	8	8	8
Work. pressure	1.5~2.8Bar	1.5~3.0Bar	1.5~3.0Bar	1.5~3.0Bar
Dia.of pipe	1"	1"	1"	1"
Cable	H07RN-F3G1.0mm <sup>2</sup>	H07RN-F3G1.0mm <sup>2</sup>	H07RN-F3G1.0mm <sup>2</sup>	H07RN-F3G1.0mm <sup>2</sup>
Length of cable(m)	1.2	1.2	1.2	1.2
QTY/20'CTN(E)	352pcs	352pcs	352pcs	352pcs
QTY/40'CTN(E)	720pcs	720pcs	720pcs	720pcs
QTY/40'(H)CTN(E)	840pcs	840pcs	840pcs	840pcs

Product NO.	CGP600inox-5CS(A)	CGP800inox-5CS(A)	CGP1000inox-5CS(A)	CGP1200inox-5CS(A)
Power	600W	800W	1000W	1200W
V&Hz	230V/50Hz, 115V/60Hz	230V/50Hz, 115V/60Hz	230V/50Hz, 115V/60Hz	230V/50Hz, 115V/60Hz
Max.pump rate(L/H)	3000	3200	3500	3800
Max.height(m)	35	40	44	48
Max.depth(m)	8	8	8	8
Work. pressure	1.5~2.8Bar	1.5~3.0Bar	1.5~3.0Bar	1.5~3.0Bar
Dia.of pipe	1"	1"	1"	1"
Cable	H07RN-F3G1.0mm <sup>2</sup>	H07RN-F3G1.0mm <sup>2</sup>	H07RN-F3G1.0mm <sup>2</sup>	H07RN-F3G1.0mm <sup>2</sup>
Length of cable(m)	1.2	1.2	1.2	1.2
QTY/20'CTN(E)	352pcs	352pcs	352pcs	352pcs
QTY/40'CTN(E)	720pcs	720pcs	720pcs	720pcs
QTY/40'(H)CTN(E)	840pcs	840pcs	840pcs	840pcs

Product NO.	CGP600(inox)-6(A,B)	CGP800(inox)-6(A,B)	CGP1000(inox)-6(A,B)	CGP1200(inox)-6(A,B)
Power	600W	800W	1000W	1200W
V&Hz	230V/50Hz, 115V/60Hz	230V/50Hz, 115V/60Hz	230V/50Hz, 115V/60Hz	230V/50Hz, 115V/60Hz
Max.pump rate(L/H)	3000	3200	3500	3800
Max.height(m)	35	40	44	48
Max.depth(m)	8	8	8	8
Dia.of pipe	1"	1"	1"	1"
Cable	H07RN-F3G1.0mm <sup>2</sup>	H07RN-F3G1.0mm <sup>2</sup>	H07RN-F3G1.0mm <sup>2</sup>	H07RN-F3G1.0mm <sup>2</sup>
Length of cable(m)	1.2	1.2	1.2	1.2
QTY/20'CTN	1772pcs(1305pcs)	1772pcs(1305pcs)	1772pcs(1305pcs)	1772pcs(1305pcs)
QTY/40'CTN	3094pcs(2610pcs)	3094pcs(2610pcs)	3094pcs(2610pcs)	3094pcs(2610pcs)
QTY/40'(H)CTN	4088pcs(2900pcs)	4088pcs(2900pcs)	4088pcs(2900pcs)	4088pcs(2900pcs)

Product NO.	CGP600(inox)-6(C,CS)	CGP800(inox)-6(C,CS)	CGP1000(inox)-6(C,CS)	CGP1200(inox)-6(C,CS)
Power	600W	800W	1000W	1200W
V&Hz	230V/50Hz, 115V/60Hz	230V/50Hz, 115V/60Hz	230V/50Hz, 115V/60Hz	230V/50Hz, 115V/60Hz
Max.pump rate(L/H)	3000	3200	3500	3800
Max.height(m)	35	40	44	48
Max.depth(m)	8	8	8	8
Dia.of pipe	1"	1"	1"	1"
Cable	H07RN-F3G1.0mm <sup>2</sup>	H07RN-F3G1.0mm <sup>2</sup>	H07RN-F3G1.0mm <sup>2</sup>	H07RN-F3G1.0mm <sup>2</sup>
Length of cable(m)	1.2	1.2	1.2	1.2
QTY/20'CTN	1772pcs(1305pcs)	1772pcs(1305pcs)	1772pcs(1305pcs)	1772pcs(1305pcs)
QTY/40'CTN	3094pcs(2610pcs)	3094pcs(2610pcs)	3094pcs(2610pcs)	3094pcs(2610pcs)
QTY/40'(H)CTN	4088pcs(2900pcs)	4088pcs(2900pcs)	4088pcs(2900pcs)	4088pcs(2900pcs)

# JET Pumps

Protection Grade **IPX4**

## Main Specifications

Max. suction head: 8m  
 Max. liquid temperature: 35 °C  
 Protection IPX4



**JETxxxA-2** **A**



**JETxxxA-2** **B**



**JETxxxS-1**

Product NO.	JET900A-2	JET1000A-2	JET1100A-2	JET1300A-2
Power	900W	1000W	1100W	1300W
V&Hz	230V/50Hz, 115V/60Hz	230V/50Hz, 115V/60Hz	230V/50Hz, 115V/60Hz	230V/50Hz, 115V/60Hz
Max.pump rate(L/H)	3400	3800	4600	4800
Max.height(m)	42	44	45	48
Max.depth(m)	8	8	8	8
Dia.of pipe	1"	1"	1"	1"
QTY/20'CTN	1143pcs	1143pcs	1143pcs	1143pcs
QTY/40'CTN	2359pcs	2359pcs	2359pcs	2359pcs
QTY/40'(H)CTN	2600pcs	2600pcs	2600pcs	2600pcs

Product NO.	JET900S-1(2)	JET1000S-1(2)	JET1100S-1(2)	JET1300S-1(2)
Power	900W	1000W	1100W	1300W
V&Hz	230V/50Hz, 115V/60Hz	230V/50Hz, 115V/60Hz	230V/50Hz, 115V/60Hz	230V/50Hz, 115V/60Hz
Max.pump rate(L/H)	3400	3800	4600	4800
Max.height(m)	42	44	45	48
Max.depth(m)	8	8	8	8
Dia.of pipe	1"	1"	1"	1"
QTY/20'CTN	1476pcs	1476pcs	1476pcs	1476pcs
QTY/40'CTN	2964pcs	2964pcs	2964pcs	2964pcs
QTY/40'(H)CTN	3397pcs	3397pcs	3397pcs	3397pcs

# JET Pumps

Protection Grade **IPX4**

## Main Specifications

Max. suction head: 8m  
 Max. liquid temperature: 35 °C  
 Protection IPX4



**JETxxxA-3C**



**JETxxxS-3CS**



**JETxxxS-3J**



**JETxxxS-3**

Product NO.	JET900S(A)-3J(3JC,3JCS)	JET1000S(A)-3J(3JC,3JCS)	JET1100S(A)-3J(3JC,3JCS)	JET1300S(A)-3J(3JC,3JCS)
Power	900W	1000W	1100W	1300W
V&Hz	230V/50Hz, 115V/60Hz	230V/50Hz, 115V/60Hz	230V/50Hz, 115V/60Hz	230V/50Hz, 115V/60Hz
Max.pump rate(L/H)	3400	3800	4600	4800
Max.height(m)	42	44	45	48
Max.depth(m)	8	8	8	8
Dia.of pipe	1"	1"	1"	1"
QTY/20'CTN	1143pcs	1143pcs	1143pcs	1143pcs
QTY/40'CTN	2359pcs	2359pcs	2359pcs	2359pcs
QTY/40'(H)CTN	2600pcs	2600pcs	2600pcs	2600pcs

Product NO.	JET900S(A)-3(3C,3CS)	JET1000S(A)-3(3C,3CS)	JET1100S(A)-3(3C,3CS)	JET1300S(A)-3(3C,3CS)
Power	900W	1000W	1100W	1300W
V&Hz	230V/50Hz, 115V/60Hz	230V/50Hz, 115V/60Hz	230V/50Hz, 115V/60Hz	230V/50Hz, 115V/60Hz
Max.pump rate(L/H)	3400	3800	4600	4800
Max.height(m)	42	44	45	48
Max.depth(m)	8	8	8	8
Dia.of pipe	1"	1"	1"	1"
QTY/20'CTN	1476pcs	1476pcs	1476pcs	1476pcs
QTY/40'CTN	2964pcs	2964pcs	2964pcs	2964pcs
QTY/40'(H)CTN	3397pcs	3397pcs	3397pcs	3397pcs

# JET Pumps

Protection Grade **IPX4**

## Main Specifications

Max. suction head: 8m  
 Max. liquid temperature: 35 °C  
 Protection IPX4



**CGPxxx-JF1**



**CGPxxx-JF1C**

# JET Pumps

Protection Grade **IPX4**

## Main Specifications

Max. suction head: 8m  
 Max. liquid temperature: 35 °C  
 Protection IPX4



**CGPxxx-JF2 B**



**CGPxxx-JF2**



**CGPxxx-JF2C**

Product NO.	CGP750-JF1	CGP900-JF1	CGP1000-JF1	CGP1100-JF1	CGP1300-JF1
<b>Power</b>	750W	900W	1000W	1100W	1300W
<b>V&amp;Hz</b>	230V/50Hz, 115V/60Hz	230V/50Hz, 115V/60Hz	230V/50Hz, 115V/60Hz	230V/50Hz, 115V/60Hz	230V/50Hz, 115V/60Hz
<b>Max.pump rate(L/H)</b>	3000	3200	3500	3600	3800
<b>Max.height(m)</b>	40	45	47	50	50
<b>Max.depth(m)</b>	8	8	8	8	8
<b>Dia.of pipe</b>	1"	1"	1"	1"	1"
<b>Cable</b>	H07RN-F3G1.0mm <sup>2</sup>	H07RN-F3G1.0mm <sup>2</sup>	H07RN-F3G1.0mm <sup>2</sup>	H07RN-F3G1.0mm <sup>2</sup>	H07RN-F3G1.0mm <sup>2</sup>
<b>Length of cable(m)</b>	1.2	1.2	1.2	1.2	1.2
<b>QTY/20'CTN</b>	1540pcs	1540pcs	1540pcs	1540pcs	1540pcs
<b>QTY/40'CTN</b>	3190pcs	3190pcs	3190pcs	3190pcs	3190pcs
<b>QTY/40'(H)CTN</b>	3828pcs	3828pcs	3828pcs	3828pcs	3828pcs

Product NO.	CGP750-JF1C	CGP900-JF1C	CGP1000-JF1C	CGP1100-JF1C	CGP1300-JF1C
<b>Power</b>	750W	900W	1000W	1100W	1300W
<b>V&amp;Hz</b>	230V/50Hz, 115V/60Hz	230V/50Hz, 115V/60Hz	230V/50Hz, 115V/60Hz	230V/50Hz, 115V/60Hz	230V/50Hz, 115V/60Hz
<b>Max.pump rate(L/H)</b>	3000	3200	3500	3600	3800
<b>Max.height(m)</b>	40	45	47	50	50
<b>Max.depth(m)</b>	8	8	8	8	8
<b>Work. pressure</b>	1.5~3.0Bar	1.5~3.0Bar	1.5~3.0Bar	1.5~3.0Bar	1.5~3.0Bar
<b>Dia.of pipe</b>	1"	1"	1"	1"	1"
<b>Cable</b>	H07RN-F3G1.0mm <sup>2</sup>	H07RN-F3G1.0mm <sup>2</sup>	H07RN-F3G1.0mm <sup>2</sup>	H07RN-F3G1.0mm <sup>2</sup>	H07RN-F3G1.0mm <sup>2</sup>
<b>Length of cable(m)</b>	1.2	1.2	1.2	1.2	1.2
<b>QTY/20'CTN</b>	400pcs	400pcs	400pcs	400pcs	400pcs
<b>QTY/40'CTN</b>	800pcs	800pcs	800pcs	800pcs	800pcs
<b>QTY/40'(H)CTN</b>	1000pcs	1000pcs	1000pcs	1000pcs	1000pcs

Product NO.	CGP600-JF2	CGP800-JF2	CGP1000-JF2	CGP1200-JF2
<b>Power</b>	600W	800W	1000W	1200W
<b>V&amp;Hz</b>	230V/50Hz, 115V/60Hz	230V/50Hz, 115V/60Hz	230V/50Hz, 115V/60Hz	230V/50Hz, 115V/60Hz
<b>Max.pump rate(L/H)</b>	2800	3000	3200	3500
<b>Max.height(m)</b>	32	38	42	45
<b>Max.depth(m)</b>	8	8	8	8
<b>Dia.of pipe</b>	1"	1"	1"	1"
<b>Cable</b>	H07RN-F3G1.0mm <sup>2</sup>	H07RN-F3G1.0mm <sup>2</sup>	H07RN-F3G1.0mm <sup>2</sup>	H07RN-F3G1.0mm <sup>2</sup>
<b>Length of cable(m)</b>	1.2	1.2	1.2	1.2
<b>QTY/20'CTN</b>	2028pcs	2028pcs	2028pcs	2028pcs
<b>QTY/40'CTN</b>	4108pcs	4108pcs	4108pcs	4108pcs
<b>QTY/40'(H)CTN</b>	4418pcs	4418pcs	4418pcs	4418pcs

Product NO.	CGP600-JF2C(S)	CGP800-JF2C(S)	CGP1000-JF2C(S)	CGP1200-JF2C(S)
<b>Power</b>	600W	800W	1000W	1200W
<b>V&amp;Hz</b>	230V/50Hz, 115V/60Hz	230V/50Hz, 115V/60Hz	230V/50Hz, 115V/60Hz	230V/50Hz, 115V/60Hz
<b>Max.pump rate(L/H)</b>	2800	3000	3200	3500
<b>Max.height(m)</b>	32	38	42	45
<b>Max.depth(m)</b>	8	8	8	8
<b>Work. pressure</b>	1.5~2.8Bar	1.5~3.0Bar	1.5~3.0Bar	1.5~3.0Bar
<b>Dia.of pipe</b>	1"	1"	1"	1"
<b>Cable</b>	H07RN-F3G1.0mm <sup>2</sup>	H07RN-F3G1.0mm <sup>2</sup>	H07RN-F3G1.0mm <sup>2</sup>	H07RN-F3G1.0mm <sup>2</sup>
<b>Length of cable(m)</b>	1.2	1.2	1.2	1.2
<b>QTY/20'CTN</b>	404pcs	404pcs	404pcs	404pcs
<b>QTY/40'CTN</b>	832pcs	832pcs	832pcs	832pcs
<b>QTY/40'(H)CTN</b>	937pcs	937pcs	937pcs	937pcs

# JET Pumps / DC Pumps

Protection Grade **IPX4**

## Main Specifications

Max. suction head: 8m  
 Max. liquid temperature: 35 °C  
 Protection IPX4



JETxxx

Product NO.	JET750	JET900	JET1000	JET1100	JET1300
Power	750W	900W	1000W	1100W	1300W
V&Hz	230V/50Hz, 115V/60Hz	230V/50Hz, 115V/60Hz	230V/50Hz, 115V/60Hz	230V/50Hz, 115V/60Hz	230V/50Hz, 115V/60Hz
Max.pump rate(L/H)	3000	3200	3500	3600	3800
Max.height(m)	40	45	47	50	50
Max.depth(m)	8	8	8	8	8
Dia.of pipe	1"	1"	1"	1"	1"
QTY/20'CTN	1320pcs	1320pcs	1320pcs	1320pcs	1320pcs
QTY/40'CTN	2640pcs	2640pcs	2640pcs	2640pcs	2640pcs
QTY/40'(H)CTN	2904pcs	2904pcs	2904pcs	2904pcs	2904pcs

# DC Pumps



CSPxxxC-M(B)

CSPxxxC-M

Product NO.	CSP50C-M	CSP80C-M
Power	50W	80W
DC	12V	24V
Max.height(m)	5	6
Max rotate speed(r/min)	5800	5800
QTY/20'CTN	7530pcs	7530pcs

# Accessories

Pressure Tank

## 2L~50L

Max. working pressure 6 Bar

## 60L~500L

Max. working pressure 10 Bar



# Accessories



1



6



11



2



7



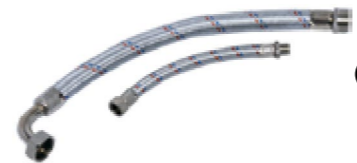
12



3



8



13



4



9



14



5

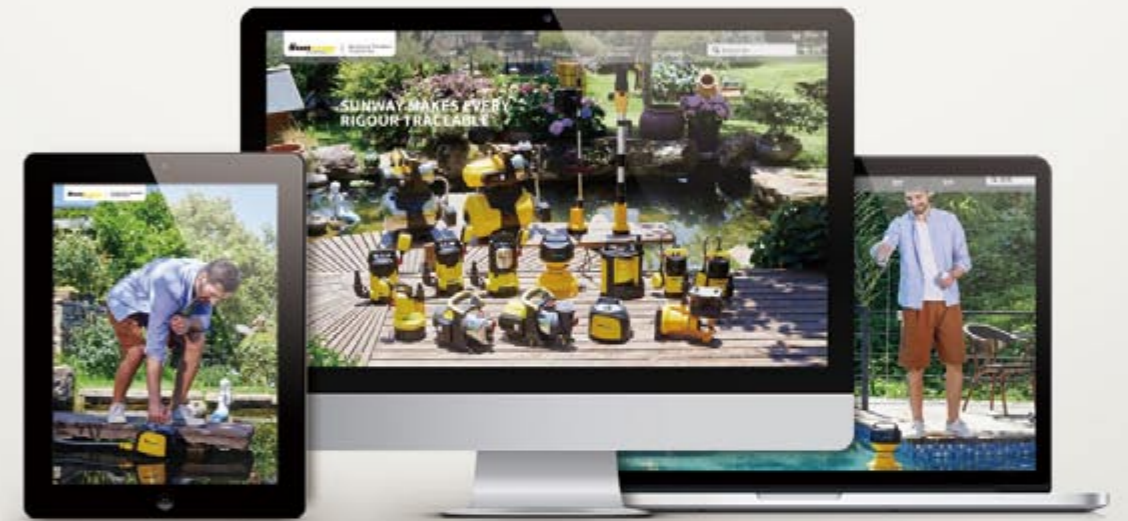


10



15

# INNOVATION MAKES LIFE EASIER AND BETTER!



For more information,  
Please visit our website:

[www.sunwaypumps.com](http://www.sunwaypumps.com)

**Sunway** | **SOL-JARDIN**  
Electro-Machinery